

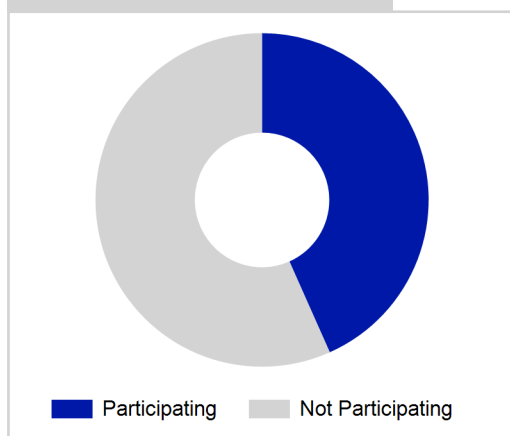
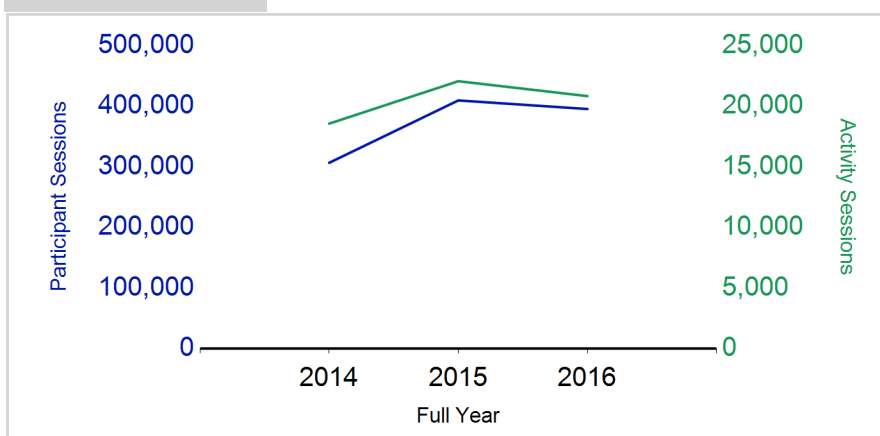
Term Report: North Lanarkshire Council

Academic Year : 2016/2017, Term(s) : Full Year

Putting sport first

sportscotland
the national agency for sport

% School Roll Participating

Participant Sessions¹

	2014 Full Year	2015 Full Year	2016 Full Year
Activity Sessions	18,557	22,058	20,826
% Purely voluntary	81%	85%	86%
Activity Session Blocks ³	2458	2776	2768
Avg. Activity Sessions / Block ⁴	7.5	7.9	7.5
Different Activities	61	67	65
Participant Sessions¹	306,493	409,460	395,273
% Female	46%	48%	47%
Distinct Participants²	19,750	22,660	21,669
Total School Roll	49,276	49,355	49,355
% Participating	40%	46%	44%
Distinct Deliverers⁵	1,008	1,367	1,416
% Volunteers	87%	92%	92%
Qualified Volunteers	578	546	554
Secondary Pupils	257	262	238
Total Deliverer Sessions ⁶	27,229	30,968	33,237
Avg. Deliverers Sessions / Deliverers	27.0	22.7	23.5
School Club Links	1,871	2,502	2,099
Schools with at least one link	155	153	156
Clubs with at least one link	125	135	129

1. Participant Sessions are the 'visits' pupils have made to activities. These figures do not represent the distinct pupils, and should only be taken as indicative of participation.

2. Distinct participants are pupils who have attended at least one session of Active Schools supported activity across the selected year/term (whether this was in a single or multiple school activity).

3. Activities are recorded in ASMO as 'Activity Session Blocks' which describe a group who meet to take part in an activity.

4. The Average Activity Sessions/Block figure shows the average length of a block (i.e. how many weeks did the average block run for?)

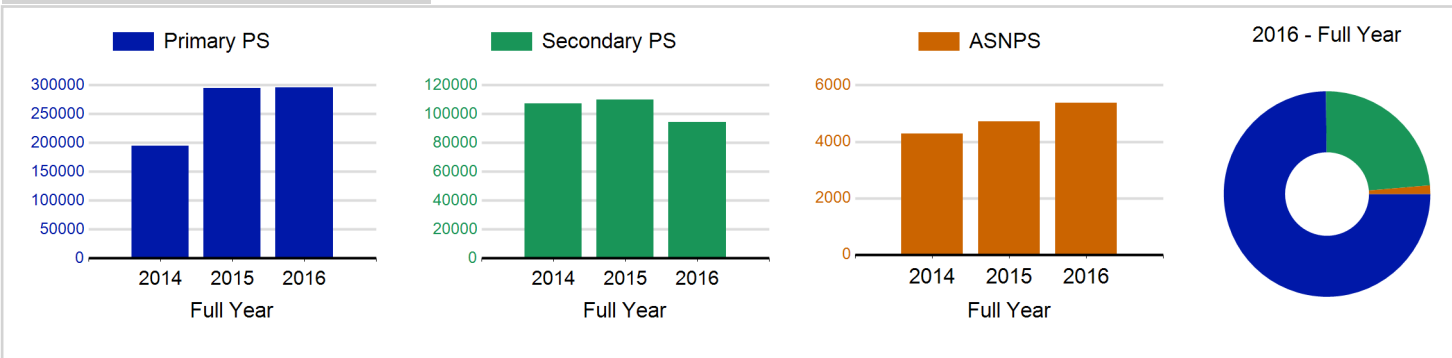
5. Distinct Deliverers are deliverers who have delivered at least one session of Active Schools supported activity across the selected year/term.

6. Deliverer Sessions are the 'visits' deliverers have made to activities. These figures do not represent the distinct deliverers, and should only be taken as indicative of delivery. Distinct deliverer information is only available at the local authority level.

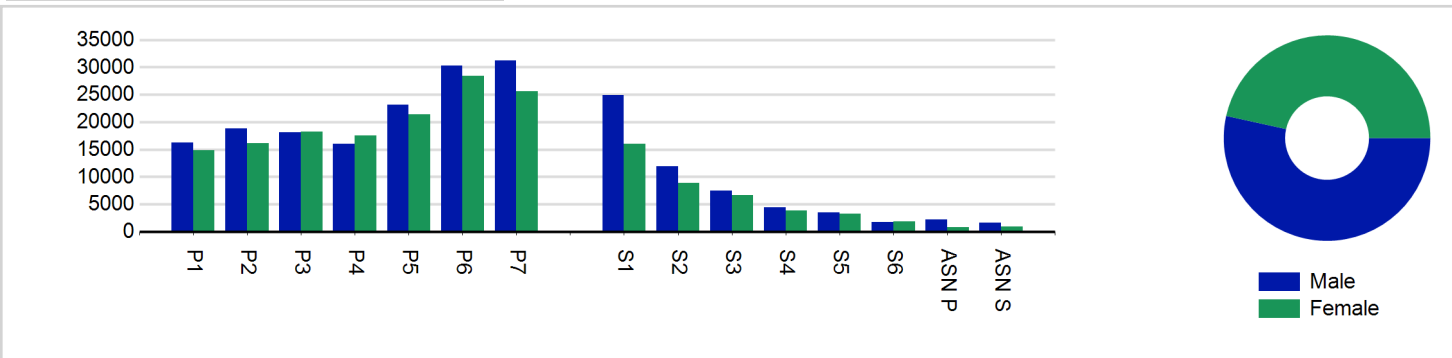
7. School Roll details are taken from the Pupil Census as at September of the Academic Year. Summaries available at <http://www.gov.scot/topics/statistics/browse/school-education/datasets>

8. Distinct Participant data collection 2011 onwards

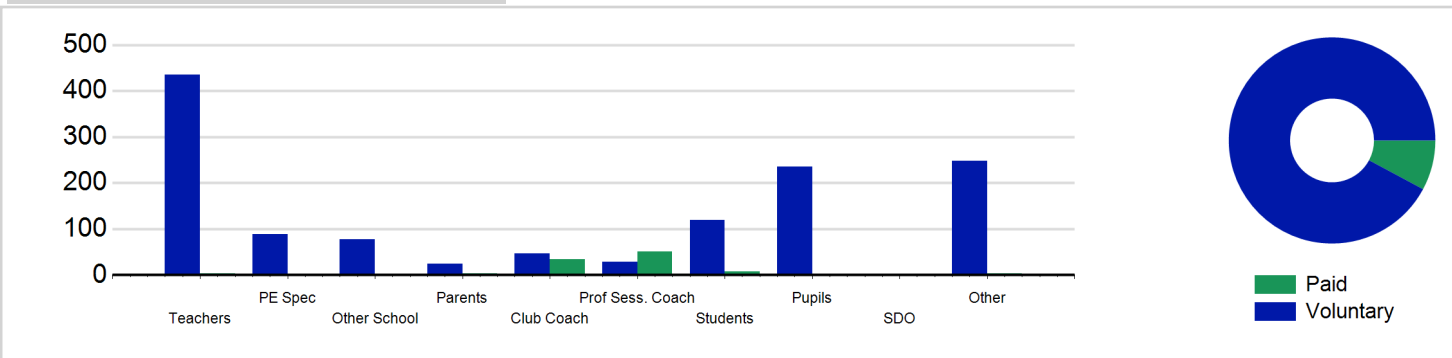
Participant Sessions¹ by School Type



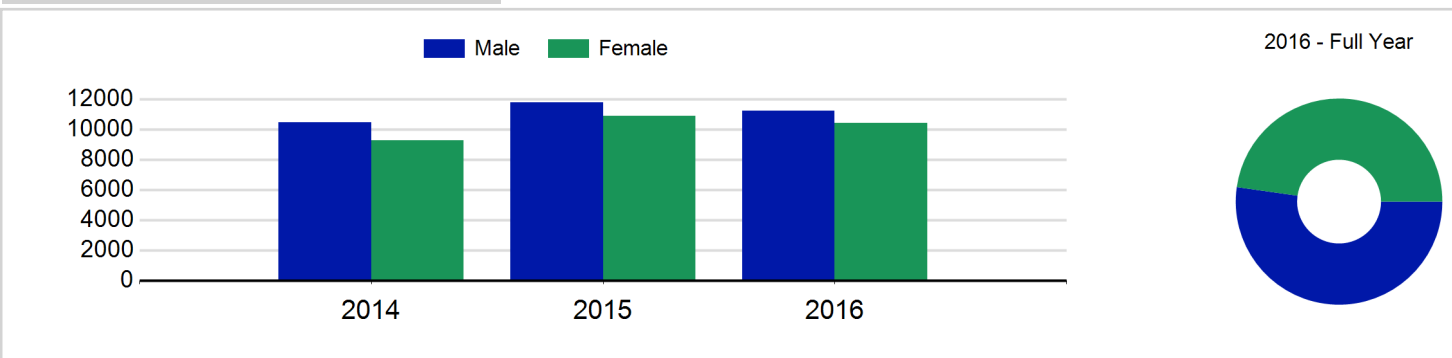
Participant Sessions¹ by Year Group and Gender



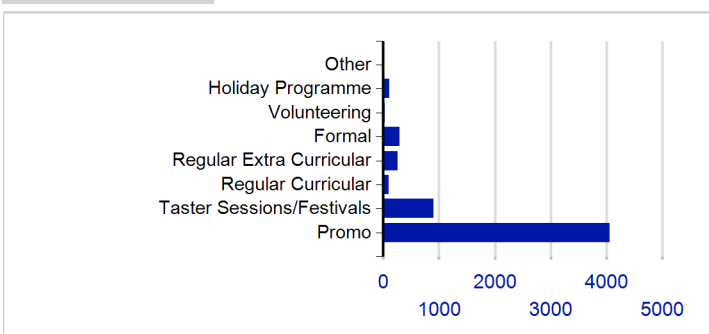
Distinct Deliverers



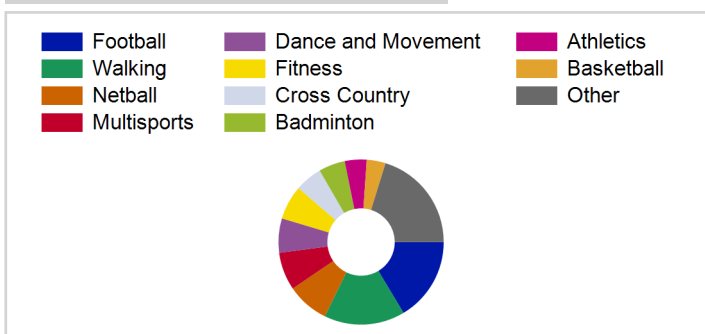
Distinct Participants² by Gender



School/Club Links



Top 10 Activities. by Participant Sessions¹



Term Report: North Lanarkshire Council

Academic Year : 2016/2017, Term(s) : Full Year

Putting sport first

sportscotland
the national agency for sport

Participant Sessions¹ by Year Group and Gender

	Male	Female
P1	16,187	14,834
P2	18,859	16,112
P3	18,105	18,273
P4	15,945	17,471
P5	23,172	21,403
P6	30,271	28,391
P7	31,189	25,568
S1	24,923	16,000
S2	11,922	8,856
S3	7,440	6,640
S4	4,383	3,770
S5	3,426	3,197
S6	1,745	1,824
ASN P	2,163	726
ASN S	1,584	894
Total	211,314	183,959

Distinct Deliverers⁵ by Type

	Paid	Voluntary
Teachers	3	435
PE Spec	2	88
Other School	2	78
Parents	3	25
Club Coach	34	47
Prof Sess. Coach	51	29
Students	8	119
Pupils	2	236
SDO	2	
Other	4	248
Total	111	1,305

Distinct Participants² by Gender

Male	11,228
Female	10,441
Total	21,669