

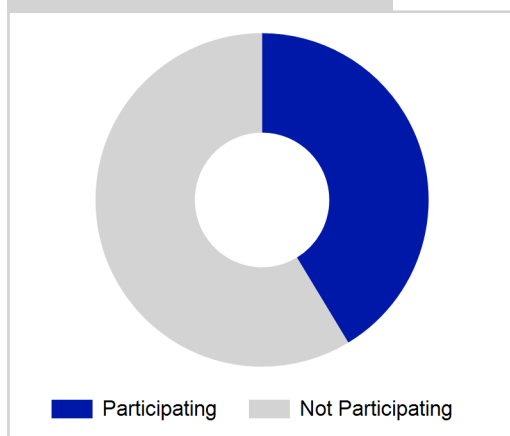
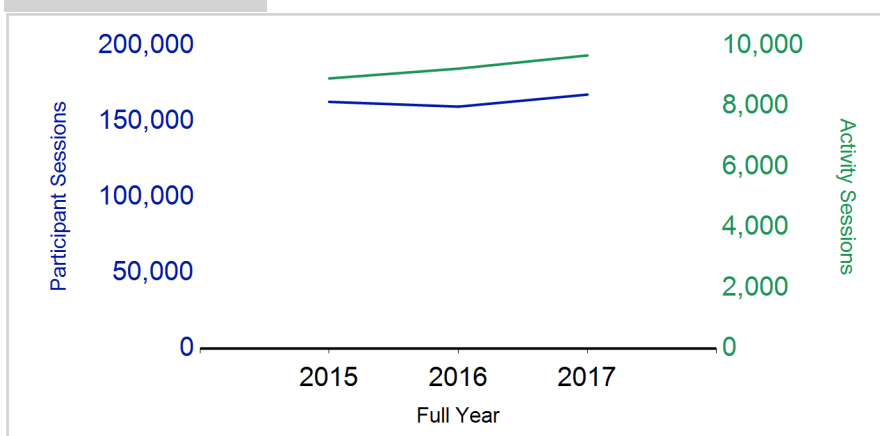
Term Report: East Lothian Council

Academic Year : 2017/18, Term(s) : Full Year

Putting sport first

sportscotland
 the national agency for sport

% School Roll Participating

Participant Sessions¹

	2015 Full Year	2016 Full Year	2017 Full Year
Activity Sessions	8,914	9,237	9,674
% Purely voluntary	63%	62%	62%
Activity Session Blocks ³	967	1028	1047
Avg. Activity Sessions / Block ⁴	9.2	9.0	9.2
Different Activities	46	40	43
Participant Sessions¹	162,818	159,670	167,633
% Female	41%	42%	40%
Distinct Participants²	5,824	5,940	5,723
Total School Roll	13,865	14,104	14,219
% Participating	42%	42%	40%
Distinct Deliverers⁵	521	498	442
% Volunteers	79%	85%	86%
Qualified Volunteers	200	207	156
Secondary Pupils	102	127	90
Total Deliverer Sessions ⁶	17,914	17,610	19,727
Avg. Deliverers Sessions / Deliverers	34.4	35.4	44.6
School Club Links	506	599	460
Schools with at least one link	41	41	41
Clubs with at least one link	94	104	93

1. Participant Sessions are the 'visits' pupils have made to activities. These figures do not represent the distinct pupils, and should only be taken as indicative of participation.

2. Distinct participants are pupils who have attended at least one session of Active Schools supported activity across the selected year/term (whether this was in a single or multiple school activity).

3. Activities are recorded in ASMO as 'Activity Session Blocks' which describe a group who meet to take part in an activity.

4. The Average Activity Sessions/Block figure shows the average length of a block (i.e. how many weeks did the average block run for?)

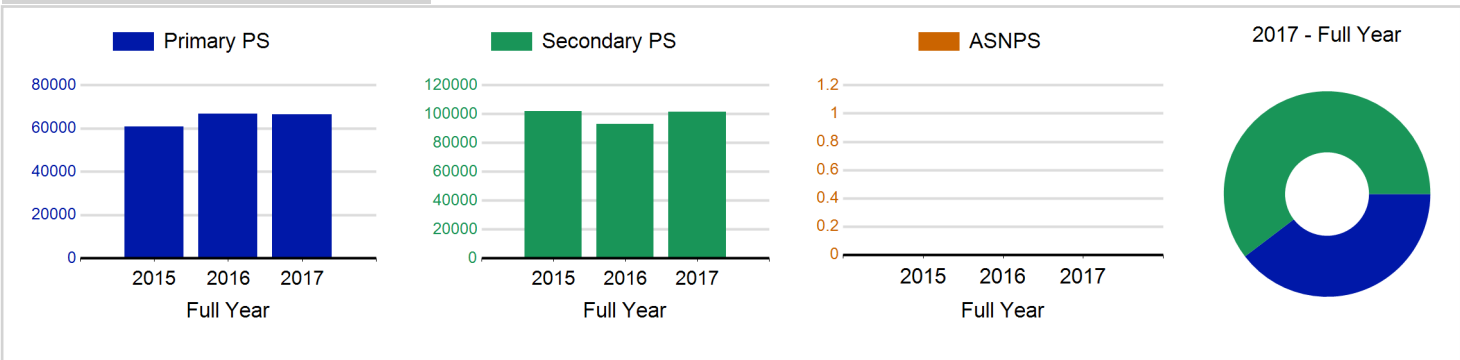
5. Distinct Deliverers are deliverers who have delivered at least one session of Active Schools supported activity across the selected year/term.

6. Deliverer Sessions are the 'visits' deliverers have made to activities. These figures do not represent the distinct deliverers, and should only be taken as indicative of delivery. Distinct deliverer information is only available at the local authority level.

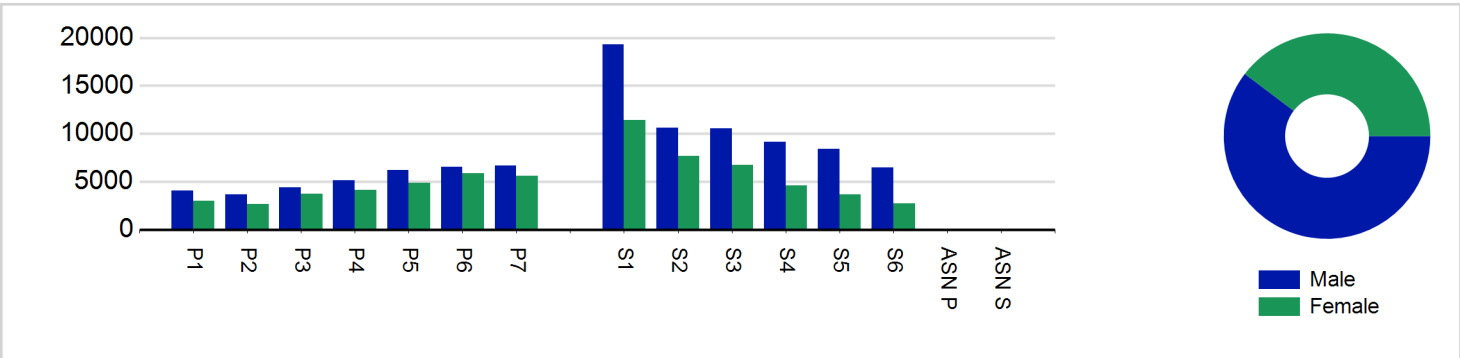
7. School Roll details are taken from the Pupil Census as at September of the Academic Year. Summaries available at <http://www.gov.scot/topics/statistics/browse/school-education/datasets>

8. Distinct Participant data collection 2011 onwards

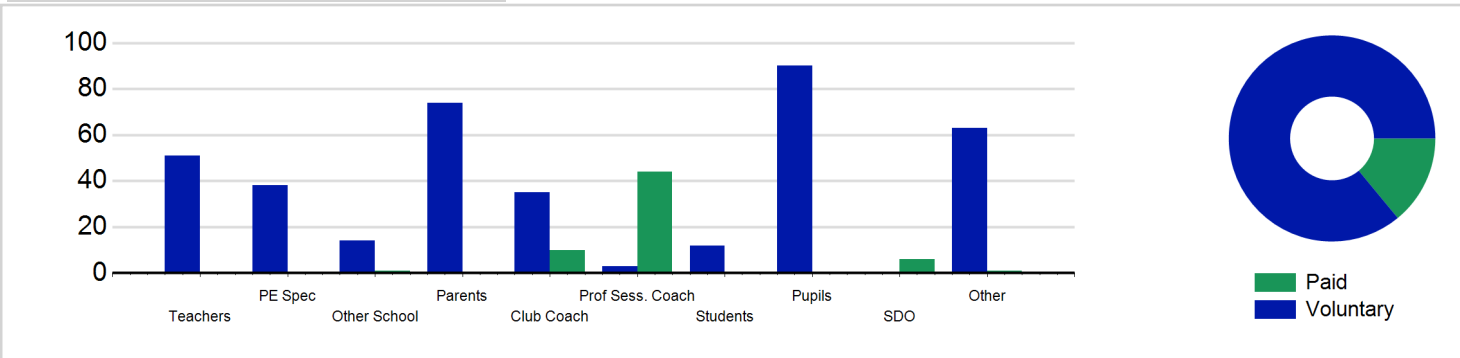
Participant Sessions¹ by School Type



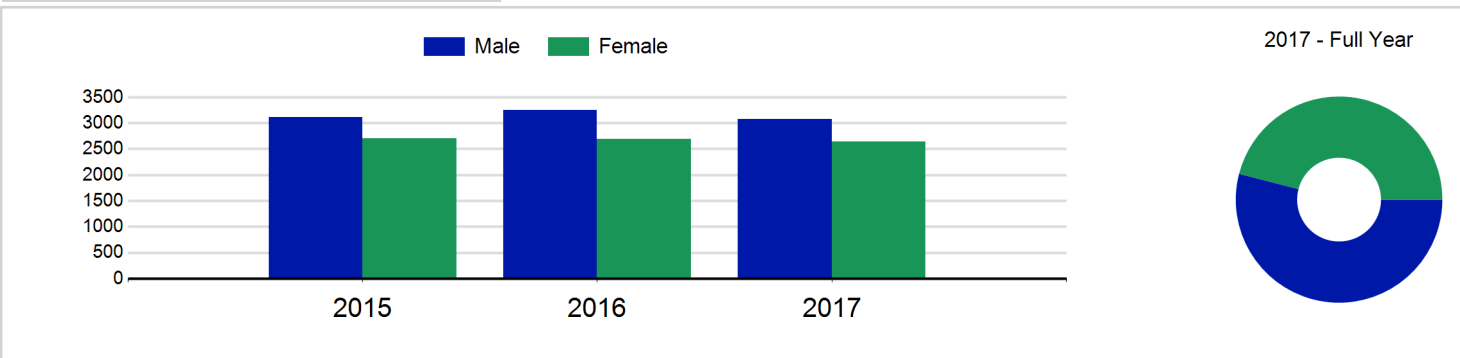
Participant Sessions¹ by Year Group and Gender



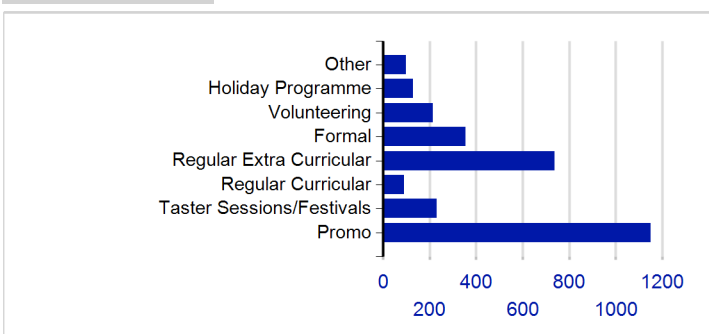
Distinct Deliverers



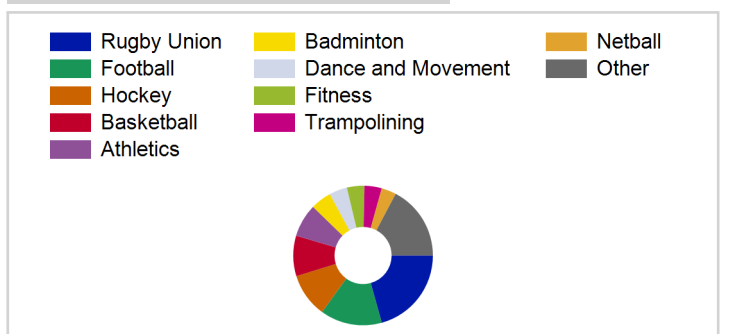
Distinct Participants² by Gender



School/Club Links



Top 10 Activities. by Participant Sessions¹



Term Report: East Lothian Council

Academic Year : 2017/18, Term(s) : Full Year

Putting sport first

sportscotland
the national agency for sport

Participant Sessions¹ by Year Group and Gender

	Male	Female
P1	4,040	2,956
P2	3,666	2,653
P3	4,417	3,708
P4	5,137	4,115
P5	6,207	4,833
P6	6,534	5,851
P7	6,691	5,596
S1	19,279	11,395
S2	10,645	7,645
S3	10,516	6,755
S4	9,128	4,615
S5	8,429	3,671
S6	6,457	2,694
ASN P		
ASN S		
Total	101,146	66,487

Distinct Deliverers⁵ by Type

	Paid	Voluntary
Teachers		51
PE Spec		38
Other School	1	14
Parents		74
Club Coach	10	35
Prof Sess. Coach	44	3
Students		12
Pupils		90
SDO	6	
Other	1	63
Total	62	380

Distinct Participants² by Gender

Male	3,082
Female	2,641
Total	5,723