

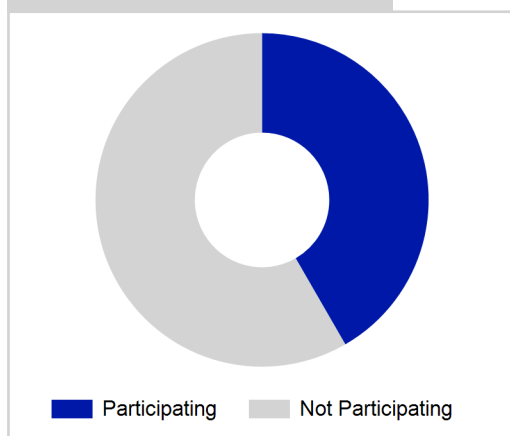
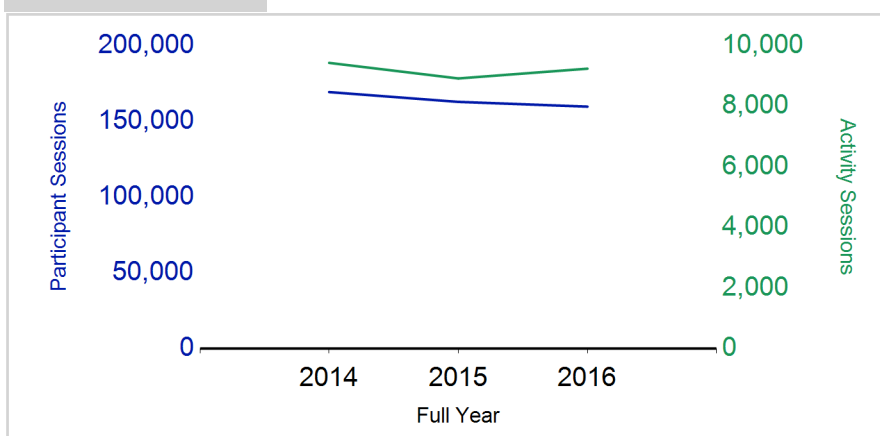
# Term Report: East Lothian Council

Academic Year : 2016/2017, Term(s) : Full Year

## Putting sport first

**sportscotland**  
the national agency for sport

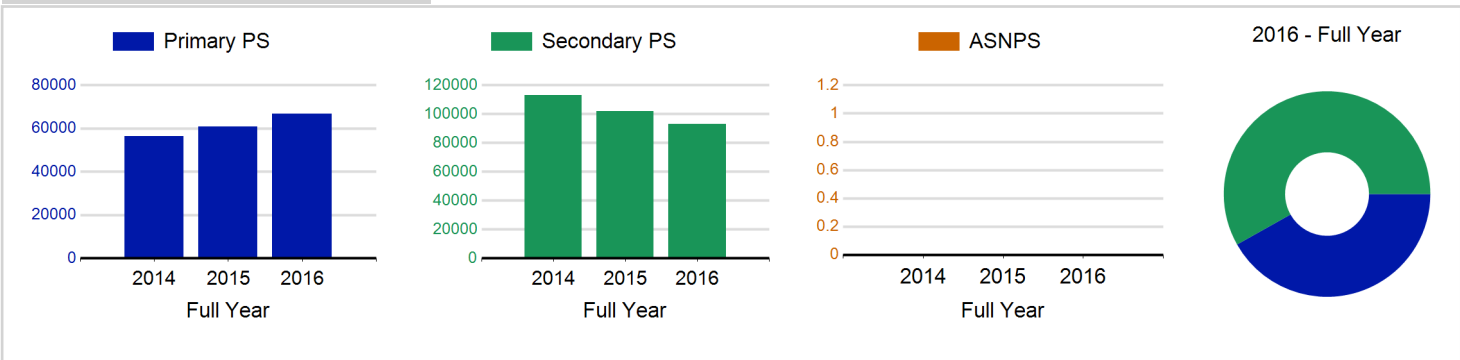
## % School Roll Participating

Participant Sessions<sup>1</sup>

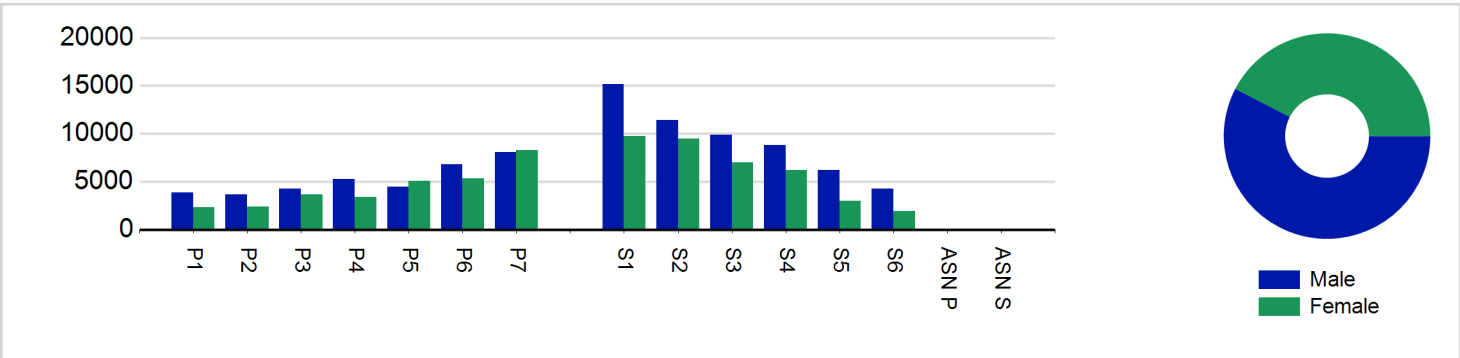
	2014 Full Year	2015 Full Year	2016 Full Year
<b>Activity Sessions</b>	<b>9,428</b>	<b>8,914</b>	<b>9,237</b>
% Purely voluntary	67%	63%	62%
Activity Session Blocks <sup>3</sup>	974	967	1028
Avg. Activity Sessions / Block <sup>4</sup>	9.7	9.2	9.0
Different Activities	47	46	40
<b>Participant Sessions<sup>1</sup></b>	<b>169,289</b>	<b>162,818</b>	<b>159,670</b>
% Female	41%	41%	42%
<b>Distinct Participants<sup>2</sup></b>	<b>5,544</b>	<b>5,824</b>	<b>5,940</b>
Total School Roll	13,716	13,865	13,865
% Participating	40%	42%	43%
<b>Distinct Deliverers<sup>5</sup></b>	<b>716</b>	<b>521</b>	<b>498</b>
% Volunteers	84%	79%	85%
Qualified Volunteers	316	200	207
Secondary Pupils	155	102	127
Total Deliverer Sessions <sup>6</sup>	19,150	17,914	17,610
Avg. Deliverers Sessions / Deliverers	26.7	34.4	35.4
<b>School Club Links</b>	<b>552</b>	<b>506</b>	<b>599</b>
Schools with at least one link	41	41	41
Clubs with at least one link	100	94	104

1. Participant Sessions are the 'visits' pupils have made to activities. These figures do not represent the distinct pupils, and should only be taken as indicative of participation.  
 2. Distinct participants are pupils who have attended at least one session of Active Schools supported activity across the selected year/term (whether this was in a single or multiple school activity).  
 3. Activities are recorded in ASMO as 'Activity Session Blocks' which describe a group who meet to take part in an activity.  
 4. The Average Activity Sessions/Block figure shows the average length of a block (i.e. how many weeks did the average block run for?)  
 5. Distinct Deliverers are deliverers who have delivered at least one session of Active Schools supported activity across the selected year/term.  
 6. Deliverer Sessions are the 'visits' deliverers have made to activities. These figures do not represent the distinct deliverers, and should only be taken as indicative of delivery. Distinct deliverer information is only available at the local authority level.  
 7. School Roll details are taken from the Pupil Census as at September of the Academic Year. Summaries available at <http://www.gov.scot/topics/statistics/browse/school-education/datasets>  
 8. Distinct Participant data collection 2011 onwards

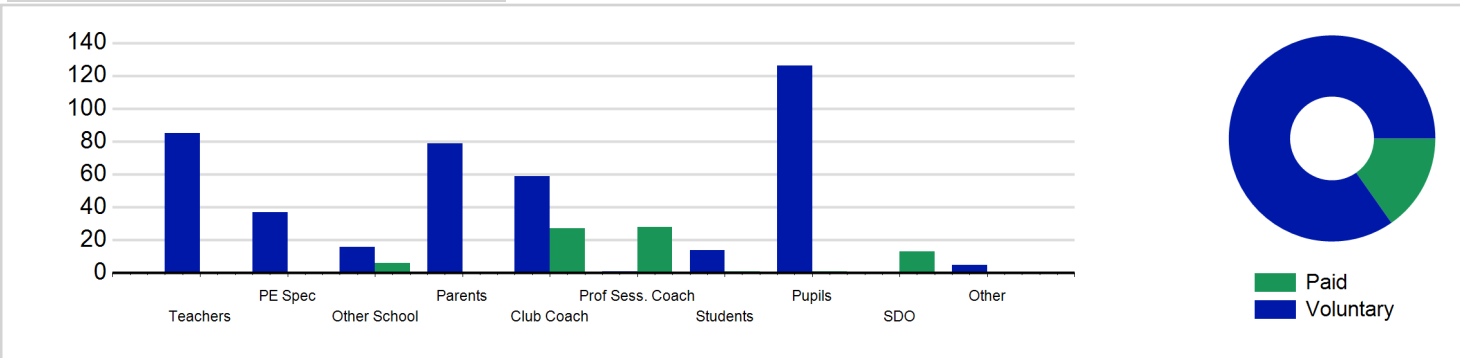
Participant Sessions<sup>1</sup> by School Type



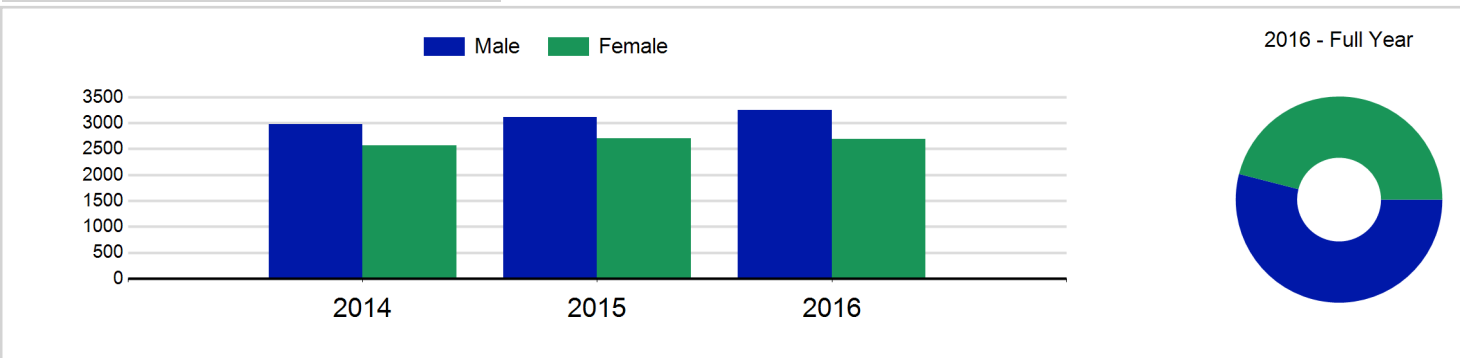
Participant Sessions<sup>1</sup> by Year Group and Gender



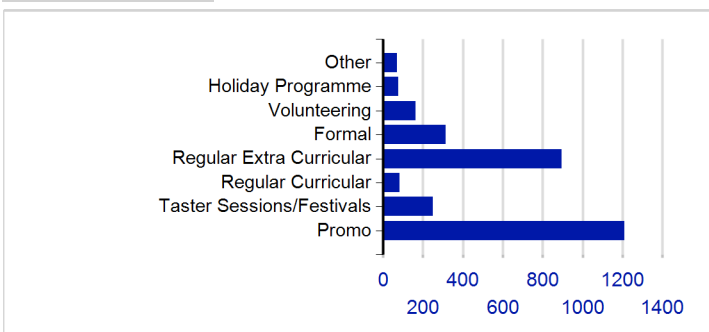
Distinct Deliverers



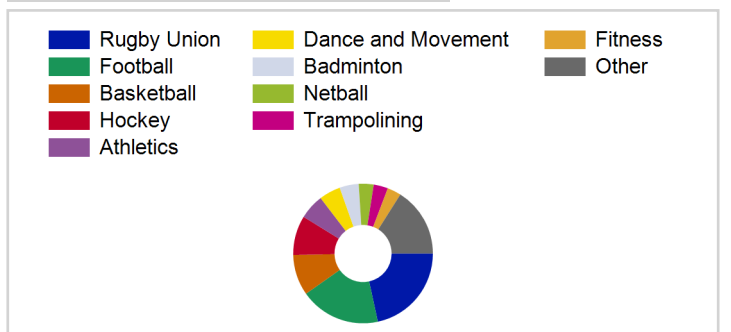
Distinct Participants<sup>2</sup> by Gender



School/Club Links



Top 10 Activities. by Participant Sessions<sup>1</sup>



# Term Report: East Lothian Council

Academic Year : 2016/2017, Term(s) : Full Year

Putting sport first

**sportscotland**  
the national agency for sport

## Participant Sessions<sup>1</sup> by Year Group and Gender

	Male	Female
<b>P1</b>	3,881	2,352
<b>P2</b>	3,646	2,365
<b>P3</b>	4,291	3,661
<b>P4</b>	5,242	3,402
<b>P5</b>	4,454	5,035
<b>P6</b>	6,774	5,358
<b>P7</b>	8,070	8,267
<b>S1</b>	15,138	9,713
<b>S2</b>	11,403	9,489
<b>S3</b>	9,854	6,995
<b>S4</b>	8,826	6,198
<b>S5</b>	6,174	2,967
<b>S6</b>	4,230	1,885
<b>ASN P</b>		
<b>ASN S</b>		
<b>Total</b>	<b>91,983</b>	<b>67,687</b>

## Distinct Deliverers<sup>2</sup> by Type

	Paid	Voluntary
<b>Teachers</b>		85
<b>PE Spec</b>		37
<b>Other School</b>	6	16
<b>Parents</b>		79
<b>Club Coach</b>	27	59
<b>Prof Sess. Coach</b>	28	1
<b>Students</b>	1	14
<b>Pupils</b>	1	126
<b>SDO</b>	13	
<b>Other</b>		5
<b>Total</b>	<b>76</b>	<b>422</b>

## Distinct Participants<sup>2</sup> by Gender

<b>Male</b>	3,247
<b>Female</b>	2,693
<b>Total</b>	<b>5,940</b>